

Precision Tools for PET Packaging

We Offer

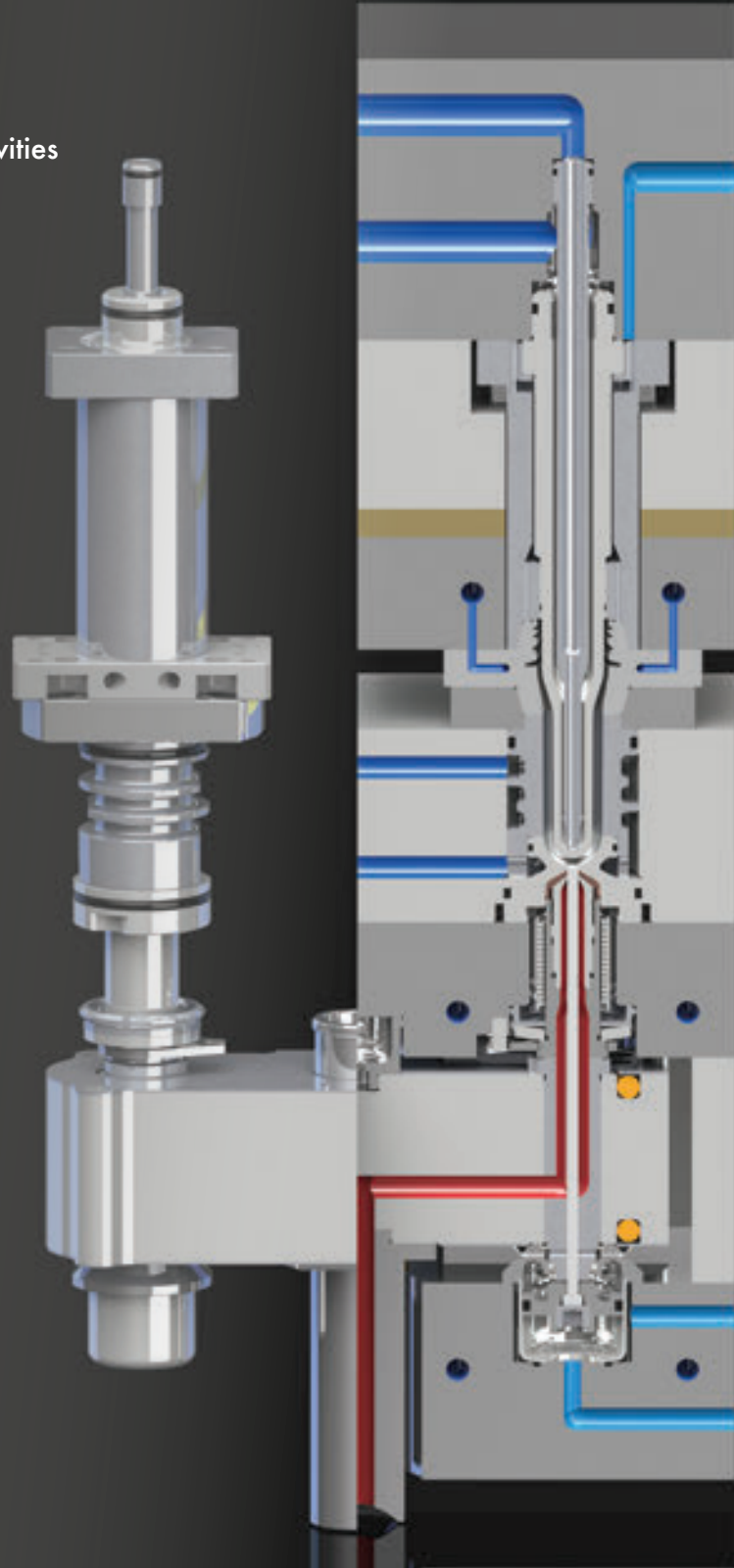
- Advanced preform moulds & hotrunners up to 144 cavities
- Turnkey PET injection molding systems
- Preform mould components
- Hotrunner components
- Preform prototyping services

Performance Benefits

- Fast cycle times
- Large processing window
- Reliable
- Durable
- Infrequent maintenance requirements
- Serviceable at customer's factory

Preform Quality Benefits

- High dimensional stability
- Minimal wall thickness variations
- Consistent part weight
- Refined parting lines
- No crystallinity
- High surface quality
- Low acetaldehyde (A.A.) levels
- Low drops in Intrinsic Viscosity (I.V.) levels



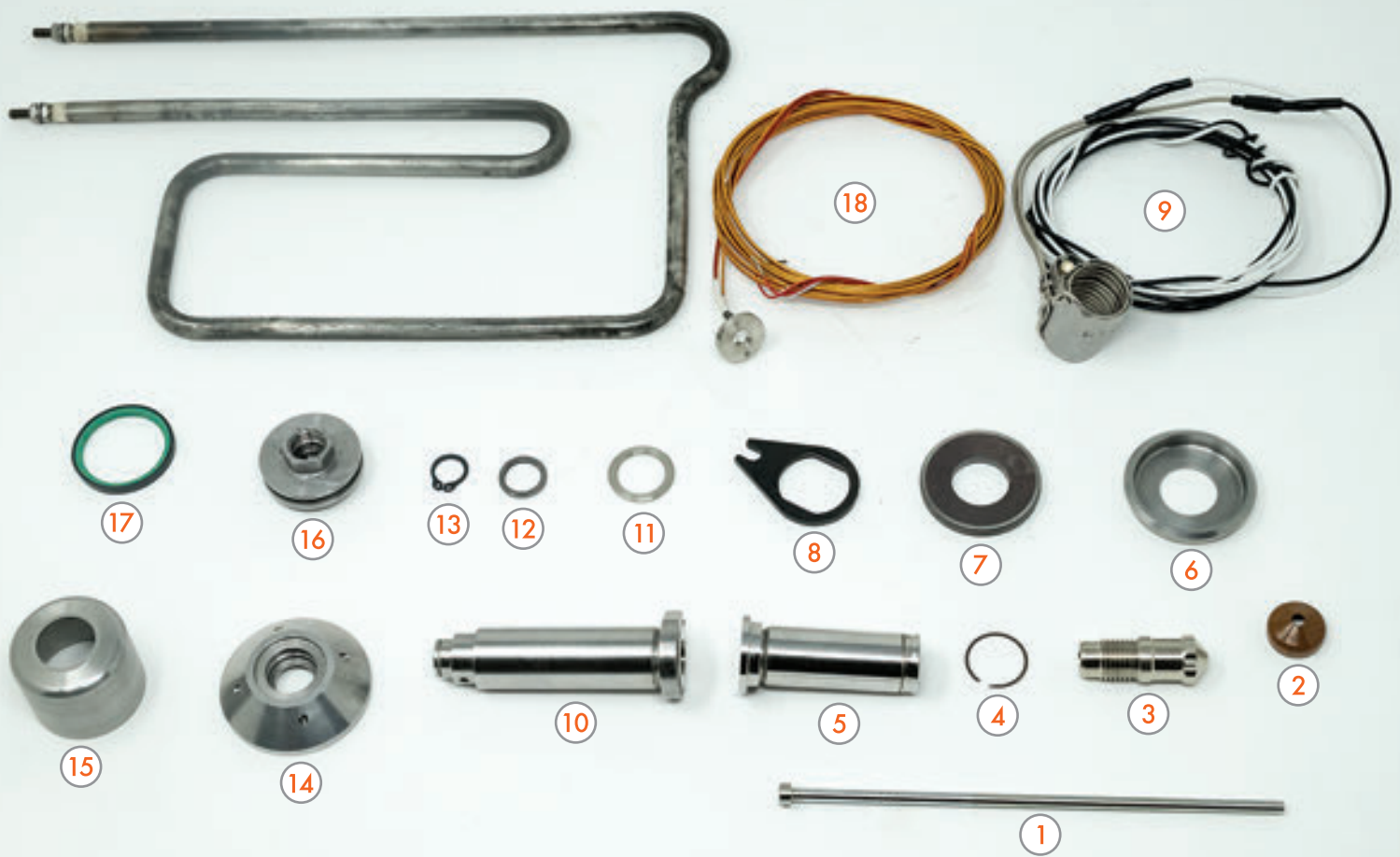




MOULD STACK PARTS



HOT RUNNER COMPONENTS



Item #	Part #	Description
①	4151233	Valve Stem
②	3019811	Nozzle Tip Insulator
③	2149709	Nozzle Tip
④	535035	Snap / Retaining Ring
⑤	2703582	Nozzle Housing
⑥	2426065	Locating Insulator
⑦	2426067	Disc Spring
⑧	2426066	Anti Rotation Tab
⑨	534192	Nozzle Heater

Item #	Part #	Description
⑩	2525668	Manifold Bushing
⑪	2468734	Metal Seal
⑫	3323778	Grafoil Seal
⑬	210776	Retaining Ring External
⑭	2408059	Back Up Insulator
⑮	3731087	Cylinder
⑯	2964040	Piston
⑰	1090035	Piston Seal
⑱	534184	Manifold Thermocouple



Precision Tools for PET Packaging
www.PETform.net