



CAPWATCHER® SC

THE INSPECTION FOR YOUR SPECIALTY CLOSURES

Special products require special solutions. The CapWatcher® SC systems are the perfect solution for every type of specialty closure: push-pull closures, sports caps, flip-top closures, closures with multiple tamper bands or dosing inserts. Flawless specialty closures are guaranteed with the CapWatcher® SC systems.

FIND OUT
MORE.



Whether you require a solution for flip-top closures, push-pull closures or dosing inserts, CapWatcher® SC systems ensure a fast and objective inspection

As **customized systems**, the CapWatcher® SC solutions are able to offer customers two assurances: Firstly, your solution **will be adapted to the available space and the inspection tasks required for your particular closure**. It is even possible to install the system without impacting on space requirements. We are able to draw on more than 10 years of experience from previous projects involving specialty closures.

Secondly, you can be sure that defects in hinges or joints, which commonly occur in specialty closures, are reliably detected and filtered out.

Finally, comprehensive defect statistics allow you to uncover potential **for process improvements**. On request, these statistics can also be sent directly to your ERP system via interfaces and linked with the jobs generated there.

Closures

- \ Flip-top closures
- \ Sports caps (including push-pull closures)
- \ Tube closures
- \ Closures for the chemicals industry
- \ Oil closures
- \ Any type of specialty cap

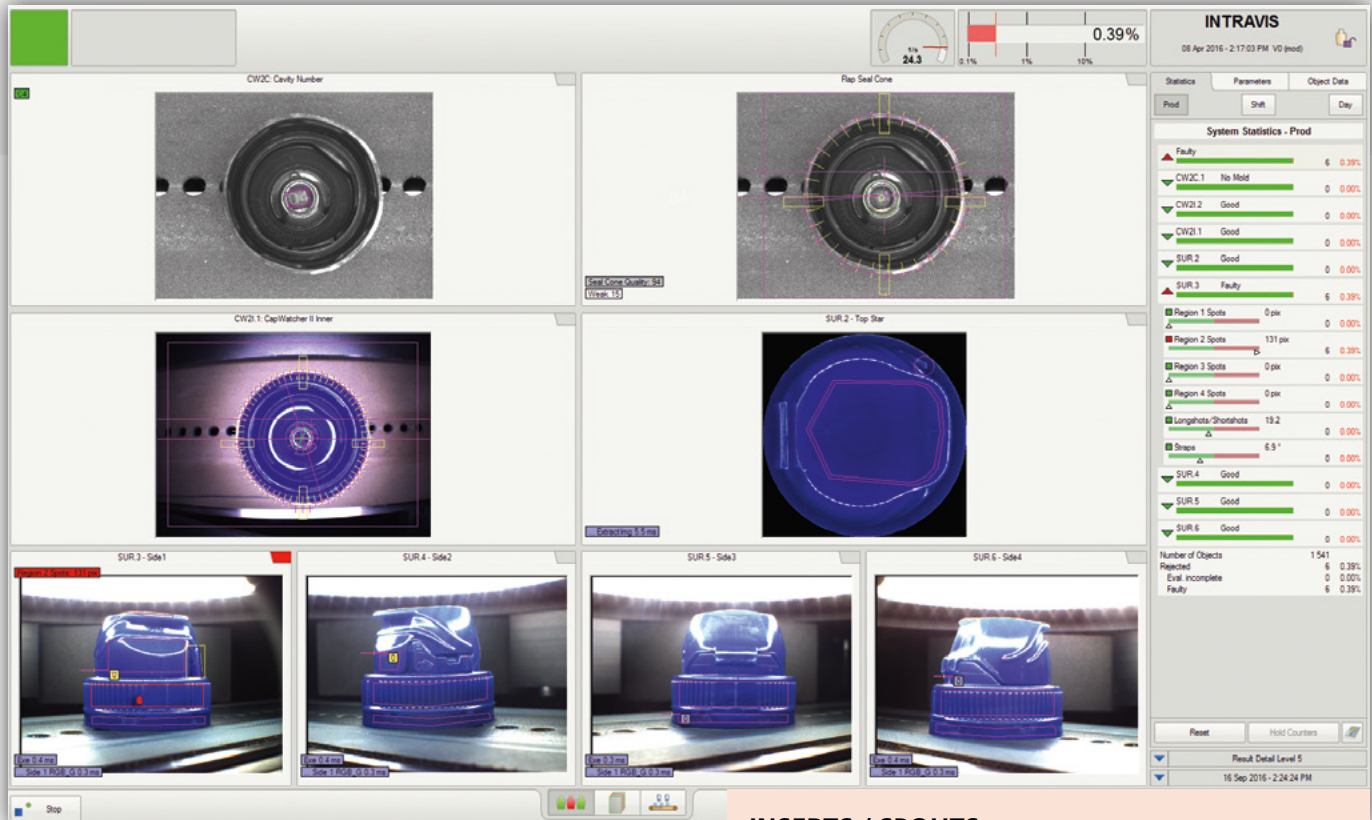
INSPECTION CRITERIA FOR CLOSURES

- \ Assembly faults
- \ Missing components
- \ Rotary position
- \ Closure position
- \ Horizontal long shots
- \ Vertical long shots
- \ Open and closed short shots
- \ Damaged pull tabs



CAPWATCHER® SC

THE INSPECTION FOR YOUR SPECIALTY CLOSURES



- Scratches and pressure marks
- Damaged or protruding flaps
- Closure height
- Diameter
- Ovalities
- Sealing elements
- Deviations in color
- Contaminations
- Burn marks
- Flow lines
- Defects related to tamper-evident bands and tamper-evident closures
- Missing or incomplete tamper-evident bands
- Defects at hinges and joints
- Cavity number reading
- Micro-hole detection
- Injection gate inspection
- Printed image inspection
- Promotional items
- Liner

INSERTS / SPOUTS

- Dosing inserts
- Liner
- Child protection
- Mouthpieces

ADDITIONAL INSPECTION CRITERIA FOR INSERTS / SPOUTS

- Missing components
- Closure height (dosing inserts only)
- Diameter and ovality
- Flow lines

If you are looking for the perfect inspection solution for your specialty closure, look no further than the Cap-Watcher® SC system.