



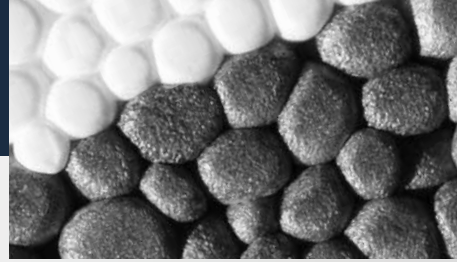
**AKKAYA®**  
EPS-EPP Production Technologies

competence in foams  
**FoamaTec®**  
industrial-  
automation



# About Us

Since 1980 Akkaya engineers and manufactures machinery for processing expandable Polystyrene (EPS) Intensive exchange of experience with all our customers enabled the engineering of cost-efficient, highly productive, easy to maintain and user friendly machines and production lines - which are exported global since 1990 as well. Our export share above 89% is due to the steady further developments of practical production-systems with the newest technology. Akkaya has been producing EPP machinery and equipments since 2010, together with Foamatec.



## SERVICES

- Plant layout
- Spare parts supply
- Field installation
- Start-up
- Customer service
- Machine maintenance
- Improvement of production costs
- Staff training
- Design of turn-key production lines

## RANGE OF PRODUCTS

- Machines and production-lines for the manufacture of EPS rigid foam insulating boards for ground floor, wall, ceiling and roof.
- Machines and production-lines for the manufacture of EPS-EPP shape mouldings

Membership





## EPS-EPP MACHINERY AND EQUIPMENTS

- Block-moulds in vertical design
- High efficient Vacuum-systems for block-moulds
- Cutting-lines for blocks
- CNC-contour cutting unit
- Recycling system
- De-dusting system
- Dosing and mixing system
- Tight packing machine for boards
- Batch pre-expanders (EPS-EPP)
- Storage silo systems for indoor and outdoor location
- Shape moulding machines (EPS-EPP)
- Take-off and stacking systems for shape moulding machines
- High efficient central Vacuum-systems for shape moulding machines
- Central material supply systems for shape moulding machines
- Turn-key production lines for block and shape moulding production
- Container type (mobile) production facilities

# ➔ EPS In Our Daily Life...

- Packing Inserts
- Box-type Packs
- Composite Mouldings
- Roof Construction (Flat and pitched Roofs)
- Wall construction
- Insulating Plasters
- Lightweight concrete
- Prefabricated systems
- Floor construction for sound and heat insulation
- Drainage boards
- Foundation Engineering

## 01

### STURDY

Polystyrene protects against moisture and maintains its strength and shape even after long periods of time. Containers and lids close tightly, guarding against leaks while maintaining an ideal temperature. Additionally, polystyrene food and meat trays perform extremely well in automated processing equipment.

Polystyrene packaging offers exceptional protection. Its shape can be molded (custom fit) to parts and products, maximizing its excellent cushioning characteristics.





# 02

## EFFICIENT

Only about five percent of a foam package is polystyrene, the rest is air! Polystyrene provides the superior insulating quality that helps hold food at the optimal eating or drinking temperature longer than many alternatives. This helps to guard against waste. Polystyrene maintains hot food at temperatures required by many health departments, yet remains comfortable to hold.

# 03

## SANITARY

Tests have shown that disposable food service ware (such as polystyrene cups, plates and utensils) is more sanitary than reusable service ware. Health officials, who regulate food service operations in schools, hospitals and restaurants, recognize this important product benefit. In fact, national environmental health officials passed a resolution stating that restricting the use of disposable cups, plates and containers would have a potentially adverse impact on disease prevention.



# 04

## ECONOMICAL

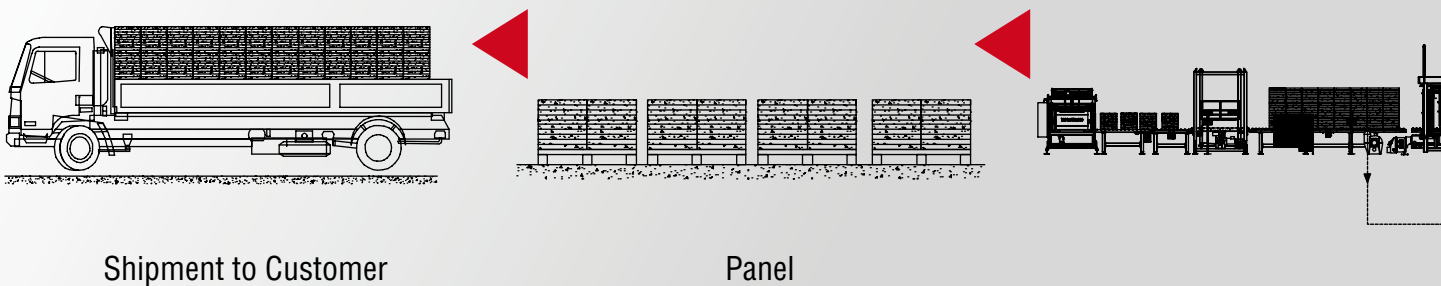
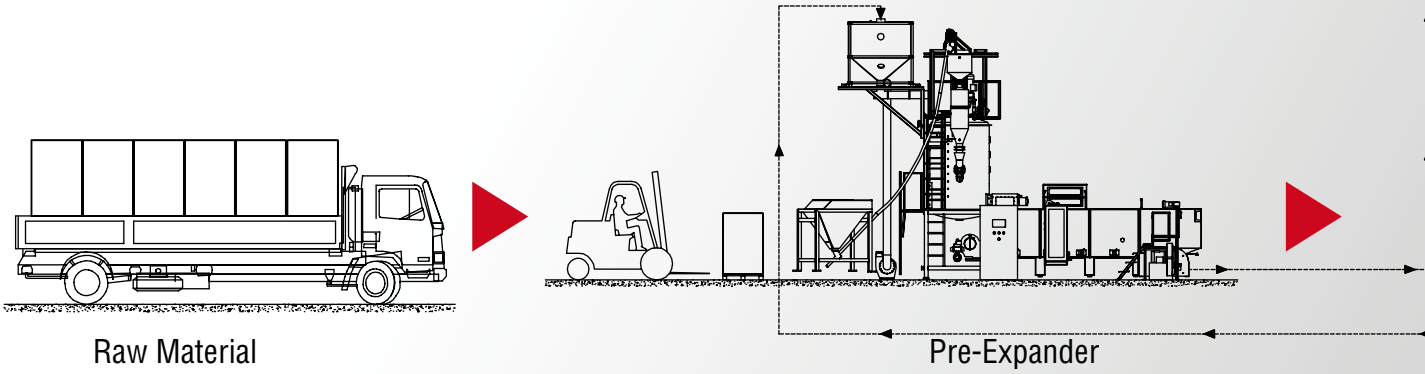
Polystyrene food service products are generally more economical to use than disposable paperboard products and reusable food service items. The wholesale price of polystyrene disposable food service products is often approximately two to three times less than an equivalent disposable paper container, and four to five times less than a comparable reusable food service item when the costs of equipment, labor, water, electricity, and detergent costs are included.

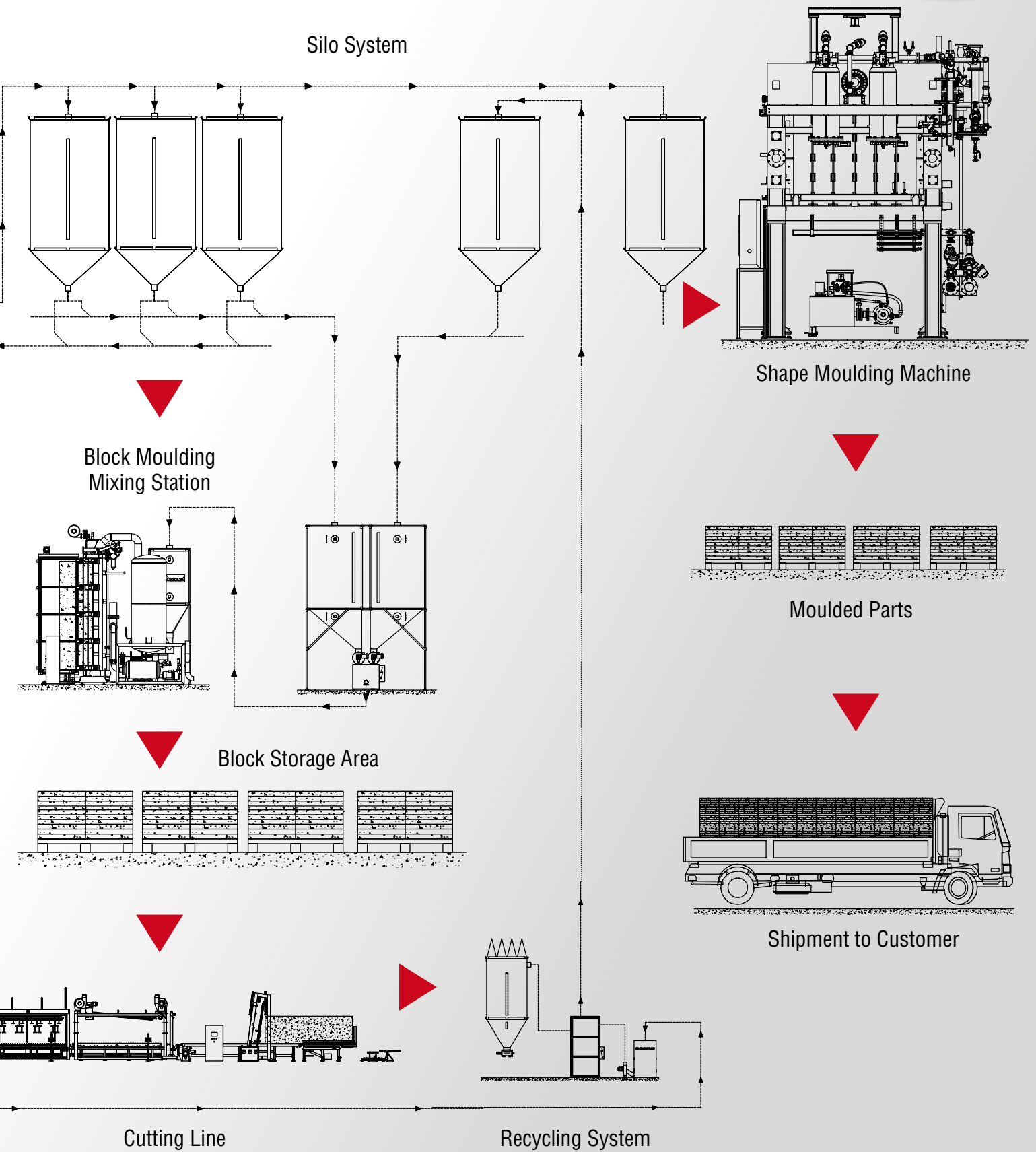
# 05

## CONVENIENT

Today's busy lifestyles require the convenience of affordable and quick take-out meals. Polystyrene packaging meets the demands of today's modern lifestyles by offering an economical and high quality food service product.

# ➔ EPS Production Material Flow Chart





# ➔ EPP In Our Daily Life...

EPP has several other advantages, useful in many fields

- flexible
- resistant to mechanical fatigue
- high shock absorbing capacity
- non-toxic, inert and sterilizable
- easy to produce, process and ship
- non-polluting and recyclable
- solvent resistant
- floats

## 01

Expanded polypropylene (EPP) Suspension stabilisation  
In contrast to the styrene in the EPS process, propylene is directly polymerised and then granulated. In order to make the resulting PP granules expandable, they are suspended in water via pressure and a high temperature, and impregnated with a foaming agent. After this step, the resulting EPP granules can be processed further in the same way as EPS beads.



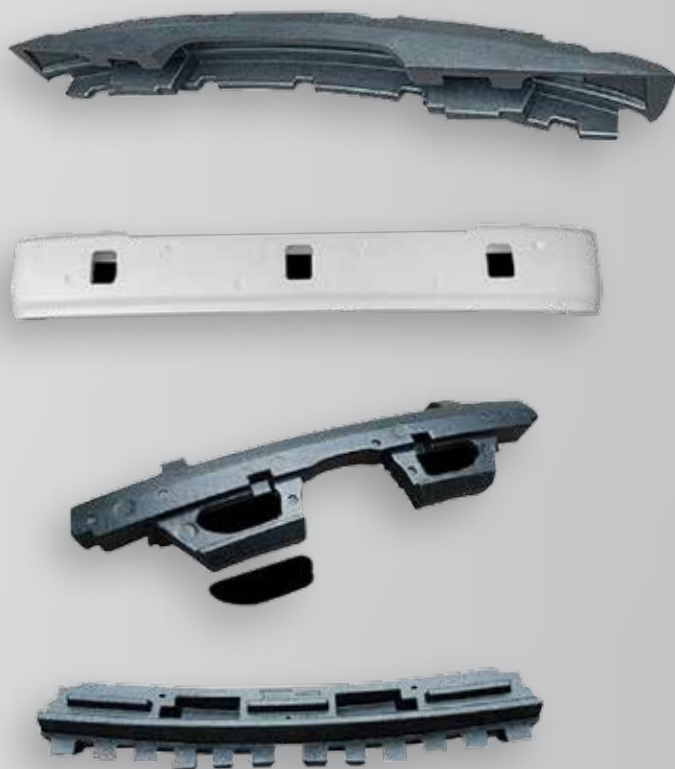
# 02

EPP products can be found in anything ranging from pharmaceutical products via food to flame retardants. Their positive properties contribute to increased health and safety in your daily life. The foam produced from polypropylene (PP) is elastic, shockproof and has a particularly pleasant feel. It is used in a range of hardness levels for the production of training shoes, car seats and even furniture, for example, to guarantee a soft landing. EPP is also popular for highquality thermal insulation packaging and shockproof packaging.



# 03

EPP is very similar to EPS, because it is also obtained from rigid polymer beads heat expansion, resulting in a closed cell structure. However, it has a better shape memory, giving it greater resilience and allowing it to deform without breaking. Expanded Polypropylene is used extensively in automotive and specialized components industries, primarily because of its resilience qualities.

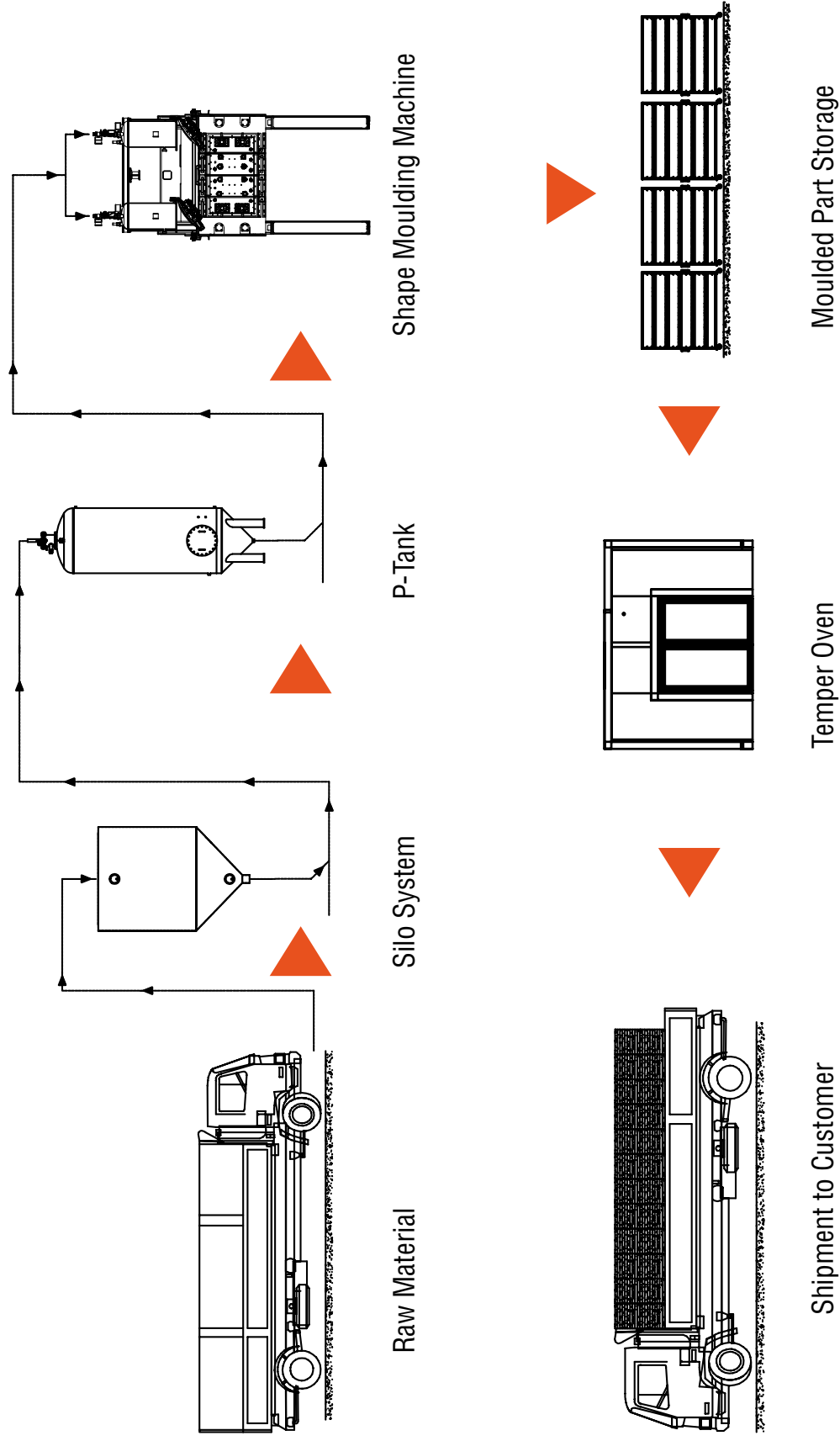


# 04

The use of Expanded Polypropylene is not limited to electronic devices packaging or car bumpers. Several other applications are possible in security and protection, sports and recreation, shipping and handling, OEM and many others domains. From protecting fresh food and insulating buildings, to the manufacture of crash resistant safety products and transportation of temperature sensitive medications, EPP plays a vital role in our daily lives.



# EPP Production Material Flow Chart



Raw Material

Silo System

P-Tank

Shape Moulding Machine

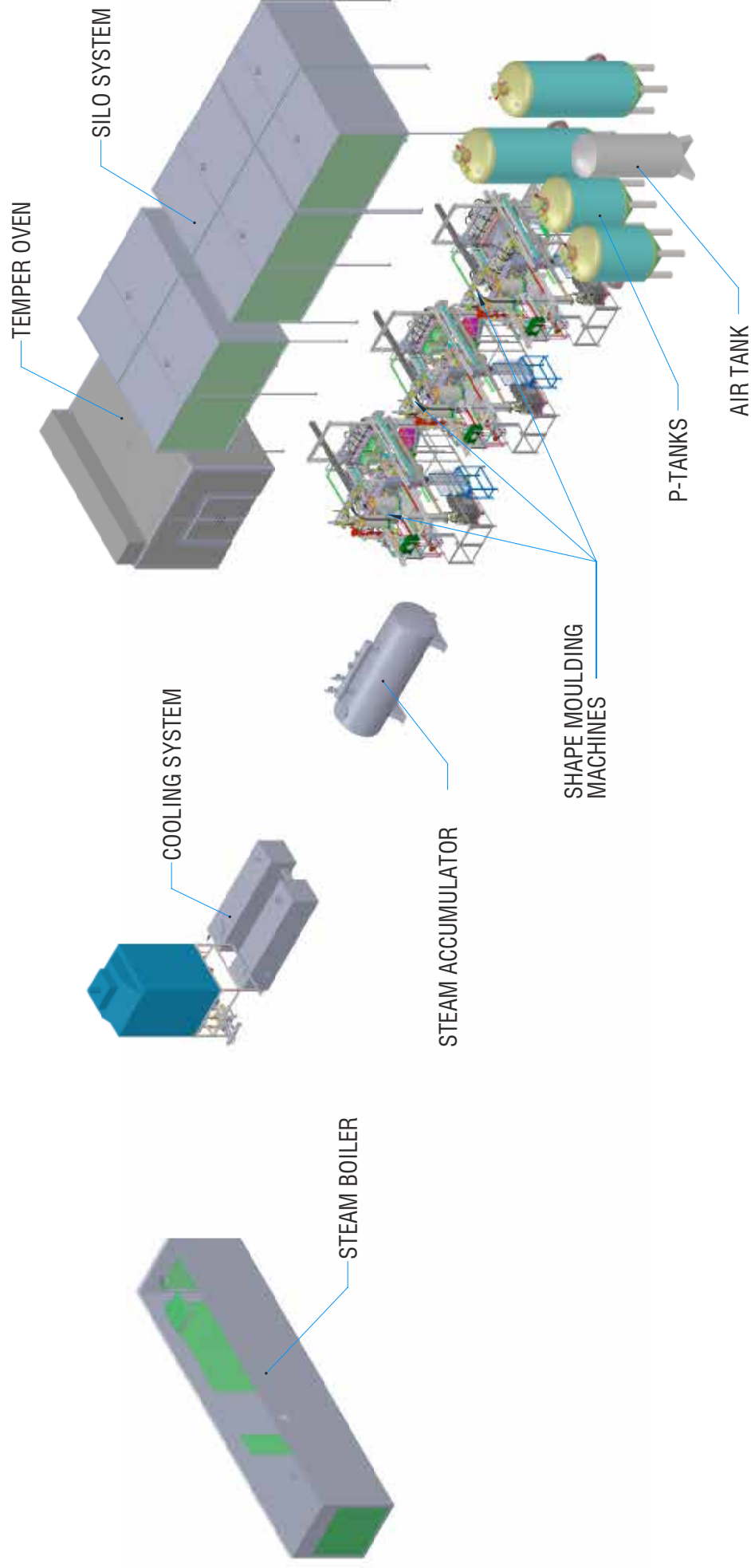
Shipment to Customer

Temper Oven

Moulded Part Storage

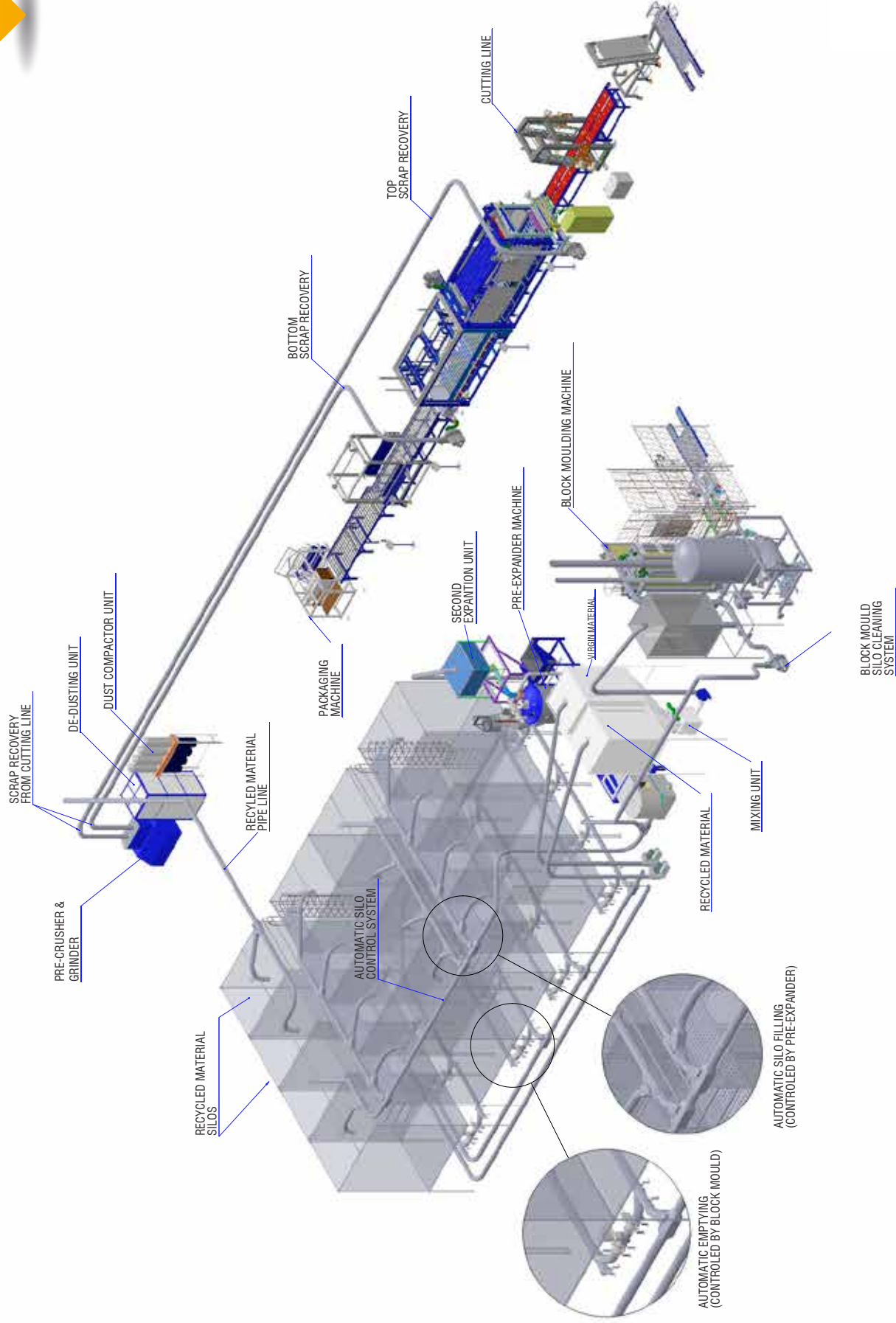


# EPP Production Factory Layout



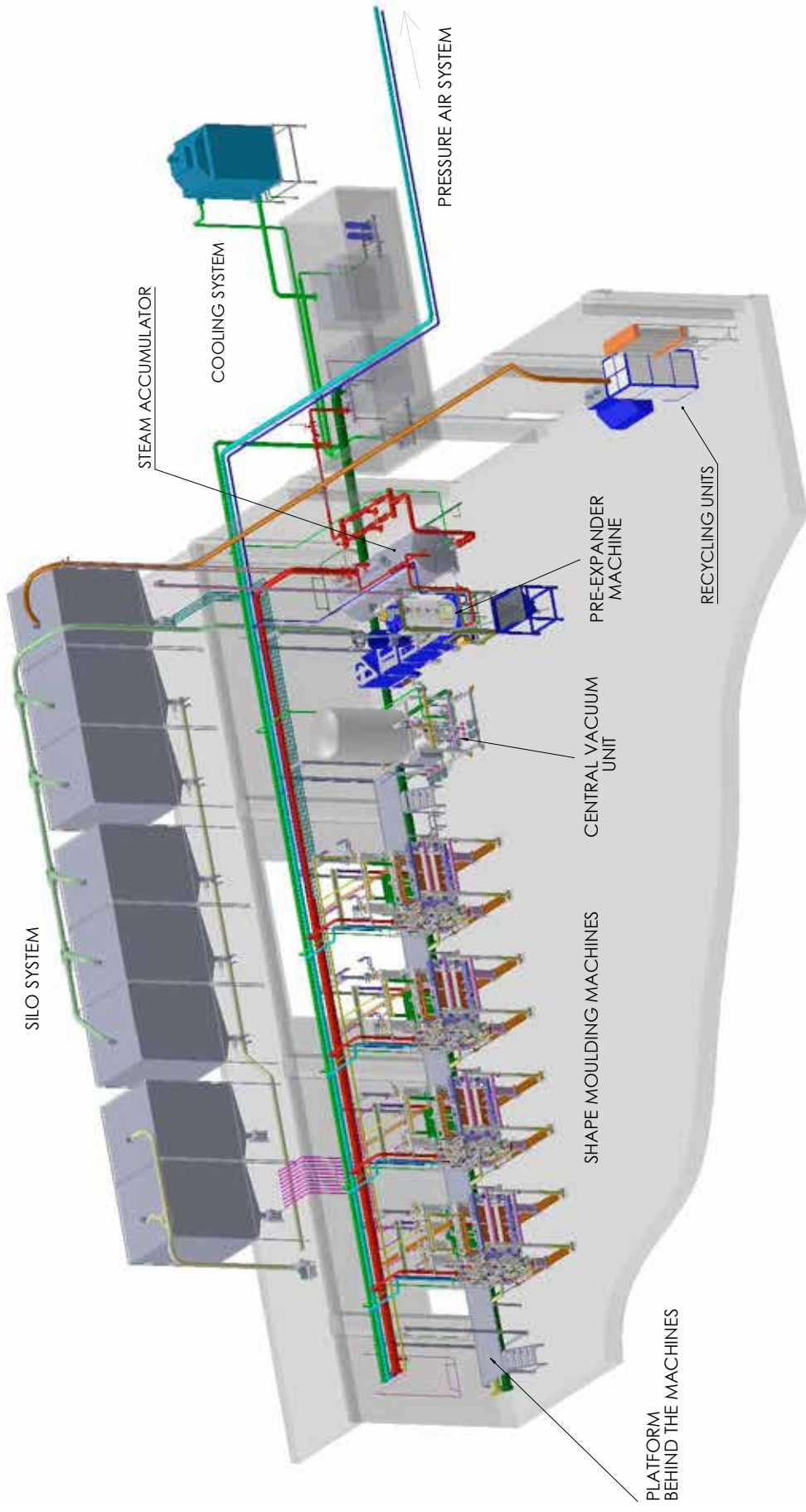


# Block Production Factory





# Shape Moulding Production Factory



# ➔ BATCH TYPE PRE-EXPANDERS



For Shape Moulding ASM-BV



Raw Material Bunker



For blockmould (ASM-B)

## PRE-EXPANDER TYPE ASM-B Features and Advantages

- CE Certification,
- AISI 304 stainless steel, expansion chamber.
- Agitator, speed control via drive. (Allenbradley-USA)
- Fluidized bed dryer, inside floor parts made of AISI 304 stainless steel
- PLC Automation System (Siemens-Germany)
- Color Touch Screen Panel size 12" (Siemens Germany)
- Recepte Menu 99 pcs
- Pressure Sensor-Temperature Sensor (Jumo-Germany)
- Proportional Steam Control Valve (Gemu-Germany)
- Proportional Exhaust Control Valve (Gemu-Germany)
- SSWW bottom for fast cycle and less steam consumption (made in Belgium)
- Pneumatic Control Valves (Festo-Germany)
- Internet Service Module (Siemens-Germany) - optional
- Homogenous density distribution
- Automatic Density Control System with adjustment control - optional
- Steam Ventilation Hood
- The unit is equipped with a steam-air heat exchanger inside, dryer
- Material Transport unit, has a rotary valve system

Batch Pre-Expander Type	ASM-B 900	ASM-B 2250	ASM-B 4500	ASM-BV 900	ASM-B 150
Capacity kg/h at 15g/l density	480-500 kg/hour	800-990 kg/hour	1260-1500 kg/hour	200-280 kg/hour	187,5 kg/hour



# BATCH TYPE PRE-EXPANDERS



## ASM-B 150 SMALL SCALE BATCH TYPE PRE-EXPANDER

- Working Pressure: max. 0,45 bar
- Chamber volume:150 lt
- Chamber material stainless steel - dryer stainless steel
- Dosaging - automatically with precision scales
- Scaling 1000/1(material feeding max 3,5 kg for 150 lt)
- Steaming and exhaust adjustment with proportional PVD valves
- Installed power : 8,4 kw
- Color : RAL 5012
- Capacity in kg/cycle: For 150 lt expansion level ;3.75 kg / per cycle and cycle time 70 sec.
- Means Hourly capacity 50 cycle x 3.75 kg =187,5 kg
- Consumption of steam (kg) per/cycle 1.8-2 kg steam per cycle
- Consumption of electricity kW per/cycle 8 Kw /hour -0.16 Kw /cycle
- Consumption of compressed air m<sup>3</sup> per/cycle 100 -125 lt/cycle
- Density tolerance 1.5 -2%



## ASM-BV 900 VACUM TYPE BATCH PRE-EXPANDER

- Chamber Diameter:900 mm
- Chamber Volume:0.6 m<sup>3</sup>
- Vacuum vessel:0,6 m<sup>3</sup>
- Vacuum pump: 7,5 kW
- Raw material with suction blower: 5,5 kW
- Raw material suction vessel stainless steel with ATEX sensor
- Raw material bunker
- Sensor ATEX type1 pc.level sensor ATEX type
- Production Capacity:
  - 15 kg/m<sup>3</sup> -(\*)17/24 m<sup>3</sup>/ hour approx. 200-280 kg/hour
  - 20 kg/m<sup>3</sup> -(\*)25/32 m<sup>3</sup>/ hour approx. 500-480 kg/hour
- (\*)Mentioned values are average capacities, which is reachable with proper quality and the right type of the raw materials.For low density production, it is necessary to use the suitable raw material only. Air consumption:±130 litre/min
- Max.air consumption on safety mode:±1.200 litre/min



# **EPS-EPP Technologies**

- Batch Type Pre-Expander**
- EPS Block Moulding Machine**
- Shape Moulding Machine**
- EPS Cutting Line**
- Silo Systems**
- EPS-EPP Equipment**





# STORAGE SILOS



## STORAGE SILOS FOR EPS & EPP Features and Advantages

### SILO BAGS

- Antistatic Polyester Material (Made in Germany)
- Custom made silo bags
- Silo-bag sewn of synthetic permeable to gas fabric, color similar to white in antistatic design (Electrostatic discharges are via woven carbon threads-not steel threads!)
- Silo top-cover with large filter cloth sections for optimal dust free venting
- Silo-inlet suitable for feeding pipes 200-250 mm i.d. (or as per requirement)
- Silo-outlet suitable for Akkaya- Silo-outlets for block or shape moulding production (or as per requirement)
- Two (2) inlets on side for level control sensors (min/max level)
- Zipper in the cone part for complete silo-cleanout

### SILO FRAMES

- Corrosion protected 1 layer primer painted
- Custom Made Silo Frames
- Produced by round pipe or rectangular profile which is calculated and designed according to the silo volume. It is protected by anti-rust



Silo Outlet



Silo Distributor Unit



Silo Pipe Switch



Silo Level Sensor

## Outdoor Silos



Before



After



# RECYCLING SYSTEM

## DE-DUSTING UNIT and EPS PRE-CRUSHER & GRINDER



### COMPLETE DE-DUSTING UNIT ATM 1500&ATS 1000 Features and Advantages

- Capacity: 15m<sup>3</sup>/hour
- In complete sound insulated cabinet with one dust-separation unit and transport fan (4 kW) to transfer the recycled material to the storage silos as well as blower (2,2 mW) to transfer the dust to the filter unit.
- Max. 300 lt filter bags to filter the dust coming from the dust separation unit.
- Electrical Control Panel 3x380 V AC
- Airlock 0,37 kW
- Dedusting Brush 0,37 kW
- Dedusting filter 1,5x1,5 mm filter 4 pcs
- ATS 1000: With combined pre-crushing and compaction of EPS Material. Density from 175-250 kg/m<sup>3</sup> depending on material  
Hopper Opening: 400x780 mm Capacity: 35-45 kg/h Size of Octagonal Rod(compacted material): 150x150 mm Dusts are collected in silo and compacted by the compactor under the silo.



### EPS PRE-CRUSHER & GRINDER TYPE: AKM 1230 Features and Advantages

- Feeding Inlet: With opening on the top 1230x600mm built with sound insulated cabinet
- EPS Pre-Crusher: With opening on the top 1230x600mm built with sound insulated cabinet (4 kW)
- with 6 mm screen 10 m<sup>3</sup>/h
- with 10 mm screen 15 m<sup>3</sup>/h.
- EPS Granulator: With opening on the top 1230x600 mm built into sound insulated cabinet.(15 kW)
- with 6 mm screen 10 m<sup>3</sup>/h
- with 10 mm screen 15 m<sup>3</sup>/h
- with 15 mm screen 20 m<sup>3</sup>/h
- Sound Insulation Cabinet: Made by mineral wool, painted steel sheet.
- Transport Fan Type: FHR 18 5,5 kW.
- Electrical Control Panel 3x380 V AC



## MIXING UNIT

### MIXING UNIT TYPE: AMX 1000 Features and Advantages

- CE Certification
- Standart Capacity: 100 m<sup>3</sup>/hour
- 2 rotary type mixers 400 mm diameter.
- 1 rotary is running at constant speed (virgin material).
- 2 rotary is running upon mixing percentage, controlled electronically,
- (2 pcs of silos 10 m<sup>3</sup>, 4 pcs of level sensor)
- 2 pcs of transfer fan 5,5 kW
- 1 pc of block filling fan 5,5 kW
- Speed control for Scrap Material
- Electrical Control Panel Siemens drive unit-connected to Blockmould.



# FULLY AUTOMATIC BLOCKMOULD MACHINE (VERTICAL TYPE)



## Features and Advantages

- Fully Automatic, Vertical Type, CE Certification
- One side opening door which ensures the steam and vacuum tightness 100 % during the process.



## Production capacity

- 15-20 block/hour - 15 kg/m<sup>3</sup> density
- Machine Color: RAL 5012 Light Blue
- Automatic Filling Silo with vacuum blower
- Foam Deloading Conveyor with weighing system
- Complete body insulated by Glasswool
- Blockmould elevator and exit conveyor for 4 pcs blocks
- PLC Automation System (Siemens-Germany)
- Color Touch Screen Panel size 12.2" (Siemens-Germany)
- Recipe Menu 99 pcs
- 2 pcs Foam Pressure Control (Jumo-Germany)
- Automatic Feeding Injector, Blow-Back Spec. Diameter Ø250-1 pc
- Steam Pres. Control Valve (Gemu-Germany)
- Pneumatic Control Unit (Festo-Germany)
- Steam Chamber Walls made by AISI 304 Stainless Steel Wedge Wire (MADE IN Belgium)
- Hydraulic System (PARKER-Germany)
- Filling Control Switch
- Printing Module (RS232)
- Internet Service Module (Siemens-Germany) - optional
- Production Reporting Module (Siemens-Germany)
- Steam, Foam, Production Diagram (Siemens-Germany)
- Homogenous Block density (+/- 3%)
- Low energy consumption and high output



# DRY VACUUM UNIT

## Features and Advantages

- CE Certification
- As an alternative to the standard vacuum units, the new type dry vacuum system is used without condenser. The system which has closed-circuit cooling system, equipped with 2 heat exchanger unit. With this system, water loss and the need for cooling towers disappeared. With high efficient dry vacuum system, it is possible to produce dry and lower internal tensioned blocks. System will be designed according to blockmould machine.
- Cylindrical Vacuum Tank 5-10 m<sup>3</sup>
- Steam/air exchanger
- Vacuum Pumps
- Water/air exchanger and closed water circuit for vacuum pumps.
- Condenser water separation system.
- Piping and pneumatic butterfly valve group.





# AUTOMATIC EPS SHEET CUTTING LINES

from 2000 to 6000 mm lengths



## BLOCK TILTING UNIT

Hydraulically operated unit with feeding conveyor for 4 pcs blocks and centering pneumatic unit.

## AUTOMATIC WIRE SETTING FOR HORIZONTAL CUTTING

- Ossilation stroke: 30 mm
- Ossilation Speed: 120 rpm/min
- Wire quantity: 80 wires
- Wire thickness: 0,47 mm
- Minimum cutting thickness: 10 mm (not for the complete block)
- Compressed air pressure: 6-7 bars
- Wire setting time: 1,5 min
- Servo motor & Invertor: Bosch Rexroth
- PLC: Siemens S7/1500
- HMI Panel: KTP 400/600/700
- Fuses: SchneiderSchrack
- Contactors: Schneider
- Photocells: Sick
- Profibus modules: Wago
- Motors & Gearbox: BonfiglioliYilmaz
- Hydraulic: Parker
- Pneumatic Drives: Festo
- Pneumatic Cylinders: Pemaks
- Bearings: SKF-INA



## TOP SCRAP RECOVERY UNIT

Equipped with vacuum suction unit, the skin come out from the top of the blockmould collected via 1400 mm conveyor

- Max. Sheet Thickness: 20mm
- Max. dimensions W:1300mm H: 1200-1600 mm

## PRECRUSHER FOR SCRAP RECOVERY SYSTEM

- Number of crusher shaft: 2 pieces
- Motor-single 4 kW
- Max.density to crush: 35 kg/m<sup>3</sup>
- Max.crushing thickness: 3040 mm
- Material transport fan: 5.5 kW included

## DE-STACKER

- The welded and bolted framework made of Standard steel profiles is grounded and painted blue according RAL 5012
- Capacity: 14-16 block/hour
- Servo driven stacking/ de-stacking adjustment
- Synchronized operation between cutting line and packing machine



## CUTTING LINE TYPE:AKH

- Block can be cut 1,2 mt or 1 mt
- Cutting Capacity: 1,2 mt/min-2,0 mt/min 15-20 kg/m<sup>3</sup> density
- PLC Automation System (Siemens-Germany)
- Color Touch Screen Panel size 15" (Siemens-Germany)
- Pneumatic Control Valve (Festo-Germany)
- Hydraulic Unit for tilting (PARKER-Germany)



### SIDE TRIMMING UNIT

3 pcs of cutting wires, 2,5 kVA Transformer capacity, Including cooling fans.



### VERTICAL CUTTING UNIT TYPE

(12 wires) 4,5 KVA Transformer capacity. Cutting always from bottom to top.



## PACKAGING MACHINE TYPE: PPZ-1300 AT

- CE Certification
- Max. Pack. Dim: 1000x1200x600 (650) mm
- Packaging in polyethylene film (PE Foil)
- Capacity: Up to 8 pack./min. (Electrical drive welding jaw)
- Sheets of styropor are manually brought on the inlet (feeding) part of machine and after that process is fully automated.
- High speed sequences of automatic cycles.
- Orientation-right
- Electrical power: 2 kW
- Operating voltage - 400 V, 50 Hz
- Air pressure - 6 bar
- Microprocessor control device - Siemens
- Seal/ foil width max. - 1.250 mm
- Paint in - RAL5015
- Densities - according to EN 13163 standards
- Film Material - Standard PE film LDPE pure, no regrind add
- Thickness-20-45  $\mu$  - most usual thickness is 30  $\mu$
- Melt index of PE - 2-3
- Slip additives -without slip additives
- Elasticity of PE along - app.10 % - elasticity is not stretching
- it is a tolerance of deformation
- Elasticity of PE cross - less than better
- Film Width: - 1.040 mm for 1.000 mm EPS



# EPS & EPP SHAPE MOULDING MACHINES



## EPS MOULDING MACHINE TYPE: AEM-E

- CE Certification
- Operating pressure max. 1.6 bar standard
- Aluminium Profile Steam Chambers,
- Quick mould change system with clamping frame
- Back ejection plate, adjustable, on fixed side.
- Mould change rail incl. moveable manual hoist 1000/2000 kg.
- Pressured filling system 120 lt with 16 exits.
- Vacuum Unit with 1 vacuum pumps (POMVAK-Turkey)+ 1 water pump 4 kW (POMVAK-Turkey)
- Air Blower 2,2 kW for material suction to pressure filler.
- Control Panel/Process Control (BACHMANN-AUSTRIA)/ Display 12" color touch panel (ASEM-ITALY)
- Electronic Stroke Measuring Device (TR-Germany)
- Prop.Regulation (Germany)
- Pneumatic Command and Control (Festo-Germany)
- High Speed Hydraulic Unit 7,5 kW (PARKER-Germany)

## EPS MOULDING MACHINE TYPE: AEM-K

- CE Certification,
- Operating pressure max. 1.6 bar Standard
- Moulding Area: 2075\*1475 mm:3,060 m<sup>2</sup>
- Female Flange Dim.: 2150\*1550 mm
- Male Flange Dim.: 2125\*1525 mm
- Suitable mould connection design for monoblock steam chamber and fast mould change system
- Hydraulic Stroke: 1500 mm
- Back ejection plate, adjustable, on fixed side.
- Mould change rail incl. moveable manual hoist 2000 kg.
- Pressured filling system 300 lt with 32 exits.
- Vacuum Unit with 2 vacuum pumps (POMVAK-Turkey)+ 1 water pump 4 kW (POMVAK-Turkey)
- Air Blower 2,2 KW for material suction to pressure filler.
- Control Panel/Process Control:(BACHMANN-AUSTRIA)/ Display 12" color touch panel (ASEM-ITALY)
- Electronic Stroke Measuring Device (TR-Germany)
- Prop. Regulation (Germany)
- Pneumatic Command and Control (Festo-Germany)
- High Speed Hydraulic Unit 11 kW (PARKER-Germany)





## EPS ELECTRICAL DRIVE MOULDING MACHINE TYPE: AEM-EE

- CE Certification,
- Electric Servo Drive (KEB-Germany)
- Operating pressure max. 1.6 bar standard
- Aluminium Profile Steam Chambers,
- Quick mould change system with clamping frame
- Back ejection plate, adjustable, on fixed side.
- Mould change rail incl. moveable manual hoist 1000 kg.
- Pressured filling system 120 lt with 16 exits.
- Vacuum Unit with 1 vacuum pumps (POMVAK-Turkey)+ 1 water pump 4 kW (POMVAK-Turkey)
- Air Blower 2,2 kW for material suction to pressure filler.
- Control Panel/Process Control: (BACHMANN-AUSTRIA)/ Display 12" color touch panel (ASEM-ITALY)
- Prop. Regulation (Germany)
- Pneumatic Command and Control (Festo-Germany)

## EPP MOULDING MACHINE TYPE: AEM-E-PP

- CE Certification
- Operating pressure max. 5 bar standard
- Steel steam chamber system, aluminium coated with outside thermal insulation.
- Multi position clamping/loading of male/female through combined hydraulic/mechanic locking system.
- Quick mould-change system with clamp-frame
- Back ejection plate, adjustable, on fixed side.
- Mould change rail incl. moveable manual hoist 1000/2000 kg.
- Pressure filling system 150 lt with 16 exits.
- Vacuum Unit with 1 vacuum pumps (POMVAK-Turkey)+ 1 water pump 4 kW (POMVAK-Turkey)
- Air Blower 2,2 kW for material suction to pressure filler.
- Control Panel/Process Control: (BACHMANN-AUSTRIA) Display 12" color touch panel (ASEM-ITALY)
- Electronic Stroke Measuring Device (TR-Germany)
- Prop.Regulation (Germany)
- Pneumatic Command and Control (Festo-Germany)
- High Speed Hydraulic Unit 7,5 kW (PARKER-Germany)



## EPS-EPP FILLING INJECTORS

- Our injector is produced to work with 2air or 3 air connection. (Means it can be used on all the machines)
- It is longer than others.~ 400 mm
- It is quick lock design.Easy service and maintenance
- Can be used for fast mould change systems.You need only the outershell.You do not need to purchase complete injector.
- Inside design is made of aluminium profile.There is a channel inside which material flow through.It can be used for any density.
- It is coming without clamping ring.
- Better price comparing to the similiar





# EPS & EPP SHAPE MOULDING MACHINES



## EPP MOULDING MACHINE AEM-TU 160/120

- CE Certification
- Operating pressure max. 5 bar standard
- Steam chamber system, Table press, meaning of possibility of connecting standart steam chambers and monoblock steam chambers.
- Multi position clamping/loading of male/female through combined
- hydraulic/mechanic locking system.
- Quick mould-change system with clamp-frame
- Back ejection plate, adjustable, on fixed side.
- Mould change rail incl. moveable manual hoist 1000/2000 kg
- Pressure filling system 150 lt with 20 exits.
- Vacuum Unit with 1 vacuum pumps (POMVAK-Turkey)+ 1 water pump 4 kW (POMVAK-Turkey)
- Air Blower 2,2 KW for material suction to pressure filler.
- Control Panel/Process Control:(BACHMANN-AUSTRIA)/ Display 12" color touch panel (ASEM-ITALY)
- Electronic Stroke Measuring Device (TR-Germany)
- Prop.Regulation (Germany)
- Pneumatic Command and Control (Festo-Germany)
- High Speed Hydraulic Unit 7,5 kW (PARKER-Germany)

## EPP MOULDING MACHINE TYPE: AEM-K PP



- CE Certification,
- Operating pressure max. 5 bar standard
- Steel steam chamber system, aluminium coated with outside thermal insulation.
- Multi position clamping/loading of male/female through combined
- hydraulic/mechanic locking system.
- Quick mould-change system with clamp-frame
- Back ejection plate, adjustable, on fixed side.
- Mould change rail incl. moveable manual hoist 1000 kg.
- Pressure filling system 90 lt with 18 exits.
- Vacuum Unit with 1 vacuum pumps (POMVAK-Turkey)+ 1 water pump 4 kW (POMVAK-Turkey)
- Air Blower 2,2 KW for material suction to pressure filler.
- Control Panel/Process Control:(BACHMANN-AUSTRIA)/ Display 12" color touch panel (ASEM-ITALY)

- Electronic Stroke Measuring Device (TR-Germany)
- Prop.Regulation (Germany)
- Pneumatic Command and Control (Festo-Germany)
- High Speed Hydraulic Unit 7,5 kW (PARKER-Germany)



# PHOTOS





As AKKAYA company, we always working hard and trying to improve ourselves to provide the best service to our clients.  
Therefore we have realized four basic points (sales, service, project and accounting) which you may address to with all your questions and remarks.

## Sales

---

Do you have sales oriented questions, you may address it to [info@akkaya-akkaya.com](mailto:info@akkaya-akkaya.com)

Examples:  
You have questions for EPS-EPP production technologies  
You may want to have a new machine or complete line  
You would like to have 3D layouts of machines/production plants

## Services

---

Do you have after sales service, technical and/or transportation oriented questions, you may address it to [service@akkaya-akkaya.com](mailto:service@akkaya-akkaya.com)

Examples:  
You have a problem with your machine and you need assistance  
You have some technical questions regarding your machine  
You have a standard repeat order for machine and spare parts  
You have purchased a machine and would like to arrange the pick up

## Project

---

Do you have specific questions and/or inquiries where you require help, please address it to [proje@akkaya-akkaya.com](mailto:proje@akkaya-akkaya.com)

Examples:  
You have a new project and you would like to have some assistance  
You have a pending proposal but have some specific questions  
You would like to place a new order but have some specific points to discuss

## Finance

---

Do you have before and/or after sales financial oriented questions and/or requests, you may address it to [muhasebe@akkaya-akkaya.com](mailto:muhasebe@akkaya-akkaya.com)

Examples:  
You have a problem with payment process  
You need assistance for any financial documents and/or procedure,

The Akkaya team is at your service to answer all your questions.



www.akkaya-akkaya.com  
info@akkaya-akkaya.com



#### Yurtiçi Satış / Domestic Sale

##### Akkaya EPS Makina İmalat San. ve Tic. A.Ş.

Marmaracık Mh. 1987. Sk. No: 25  
Ergene, Tekirdağ / Türkiye  
Tel: +90 (282) 655 58 94  
Fax: +90 (282) 655 58 92

##### Free Zone Export Akkaya EPS-EPP Mak. San. A.Ş.

Karamehmet Mh. Avrupa Serbest Böl.  
Avrasya Bulvarı No: 30  
59880 Ergene, Tekirdağ / TÜRKİYE  
Tel: +90 (282) 655 58 94  
Fax: +90 (282) 655 58 92

#### Representatives of Akkaya

##### Middle Europe

**FoamaTec GmbH**  
Hauptstraße 48  
56357 Bogel / Germany  
Tel: (+49) 6772 96 98 110  
Mobil: (+49) 1609 47 26 533  
E-mail: info@foamatec.de

##### Italy and South America

**Libero Piscitelli**  
Tel: +(39) 06 92 93 67 00  
Tel (Paris): +(33) 1 77 15 62 34  
E-mail: libero.piscitelli@yahoo.co.uk

##### France and North Africa

**Fernand Burry, Burry Trading**  
Avenue du mont soleil 83400  
Hyeres / France  
Tel: +(33) 494 35 2134  
Gsm: (+49) 612 10 3439  
E-mail: burrytrading@gmail.com

##### Finland

**SEPTOR OY / Mr. Fredrik Björklöf**  
Tel: +(358) 20 7209 630  
Mobile: +(358) 400 911 435  
E-mail: fredrik.bjorklof@septor.fi

##### Ukrain

**Eugen Krebs**  
**Handelsvermittlung**  
Am Bach 31, 32758  
Detmold / Germany  
Tel: (+49) 0 52 32 / 8 00 46  
E-mail: eugenkrebs@web.de

##### Balkans

**EPS Production**  
**Technologies Vlatko Misheski**  
Skopje / Macedonia  
Tel: +(389) 70 277 838  
E-mail: vlatko@Akkaya-Akkaya.com

#### Membership

